



## Sigma

### Extensive flexibility

The Sigma was designed as a ground mount system especially for laminates. However, it is equally well suited to bear framed modules. Depending on project requirements, both single-row and multi-row versions are available.

### Outstanding adjustability

The outstanding adjustability of the Sigma system is provided by the combination of base rails and X-Stones. These technologies make it possible for the system to follow terrain height variations along the span of the system up to gradients of  $\pm 10^\circ$ , thereby eliminating the need for cost-intensive earthworks.

### Significant savings

Sigma stands out due to its very high degree of pre-assembly, its simple, functional design and the minimal number of tools needed for installation. Especially in big projects, this generates considerable savings in installation costs.

### Maximum service life

Two of the essential characteristics of the Sigma are long service life and very minimal maintenance requirements. The all-aluminium and stainless steel support design guarantees corrosion resistance and maximum durability. Galvanic corrosion between aluminium and the galvanized steel ramming posts is prevented by anodic coating.

### Well-thought-out ecologically

Due to the ground clearance of the modules and the lack of concrete foundations, Sigma avoids both the sealing and the desolation of the ground. In addition, the system is completely recyclable and enables easy renaturalisation of the terrain.



Open terrain



Unframed module



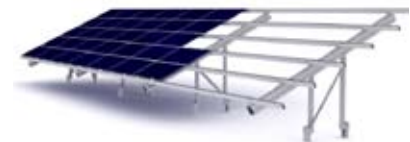
Framed module



Orientation  
portrait



Orientation  
landscape



Five-row Sigma

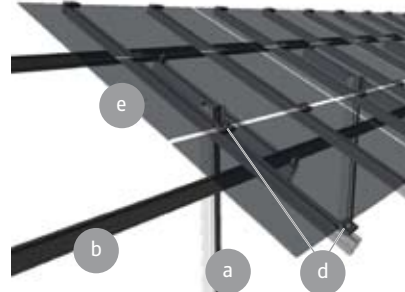




<b>Application</b>	<i>Open terrain - ground mount</i>
<b>PV modules</b>	<i>Framed, unframed</i>
<b>Module layout</b>	<i>Single-row or multi-row, up to approx. 12 m per frame unit</i>
<b>Module orientation</b>	<i>Portrait or landscape, depending on module type and number of rows</i>
<b>Module inclination</b>	<i>25° and 30°<sup>1</sup></i>
<b>Ground clearance</b>	<i>75 - 80 cm<sup>1</sup></i>
<b>Sigma post spacing</b>	<i>Dependent on laminate or module type and site conditions</i>
<b>Standards</b>	<i>Eurocode 1 - Actions on structures Eurocode 9 - Design of aluminium structures</i>
<b>Supporting profiles</b>	<i>Extruded aluminium (EN AW 6063 T66) Sigma post: Galvanised steel</i>
<b>Small parts</b>	<i>Stainless steel (V2A)</i>
<b>Colour</b>	<i>Natural</i>
<b>Warranty</b>	<i>10 years<sup>2</sup></i>



Detailed view of the pre-assembled adapter



Detailed view of three-row Sigma with unframed modules

- a Ramming post
- b Base rail
- c Adapter with chevron and X-Stones
- e Module (end) clamp/ laminate (end) clamp
- d PV module

1 Other on demand.

2 Please find the exact terms in the Mounting Systems GmbH Warranty document.