



Lambda Light

Flexible modular system

With the Lambda Light system multiple rows of modules can be connected to each other. The Lambda Light has a standard pitch of 15°. ¹The pitch of 15° allows minimum ballast with an optimum of profit. The Lambda Light is installed in a composite of at least 10 m². Modules can be arranged flexibly in landscape installation.

Optimal adaptability

The clever low ballast standard system has been specifically developed for use on industrial buildings with low admissible additional loads.

Rapid installation

All components are designed for easy installation. The established Quickstone-technology, pre-assembly and a clever product design with a low number of overall parts all add up to minimal installation time and the necessity of very few tools.

Static reliability

Mounting Systems' service includes a static verification of all configurations offered. ¹ On demand ², an official verifiable static calculation is available. Through extensive aerodynamic testing during the development phase, Lambda Light is statically verified despite minimal ballasting.

Maximum service life

All components are made of either aluminium or stainless steel. Their high resistance to corrosion guarantees maximum service life and full recyclability.



Flat roof



Framed module



Orientation
landscape



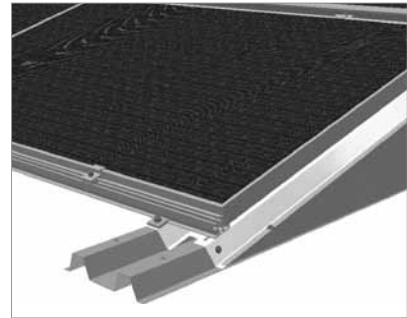
¹ Others on demand.

² At extra cost.

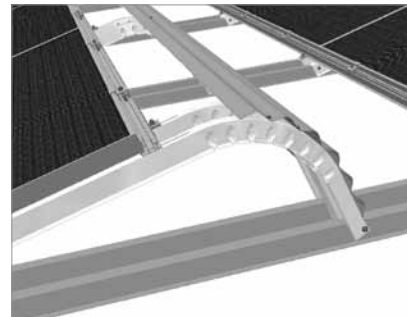


mounting
systems

Application	<i>Flat roofs ¹</i>
Height of Building	<i>Dependant on wind loads on site</i>
PV modules	<i>Framed</i>
Module layout	<i>Composite (min. 10 m²)</i>
Module orientation	<i>Landscape</i>
Pitch	<i>15° (other upon request)</i>
Size of module array	<i>Any size possible, min. 10 m²</i>
Position of the module array	<i>No special requirements</i>
Roof clearance	<i>6 cm (other upon request)</i>
Standards	<i>Eurocode 1 – Action on structures Eurocode 9 – Design of aluminium structures ²</i>
Supporting profiles	<i>EN AW 6063 T66, EN AW 6060 T6</i>
Sheet metal components	<i>Aluminium</i>
Small parts	<i>Stainless steel (V2A)</i>
Warranty	<i>10 Years ³</i>



Front detail



Top detail

¹ Attention: For any project, please check the static suitability of the building!
² Official assessable static calculation available on request, at extra cost.
³ Please find the exact terms in the Mounting Systems GmbH warranty document.